

LEATHER

MATERIAL INFORMATION

PiWc Vinyl

Description:	Printable vinyl wallcovering that meets Type II physicals
Width:	54"
Weight:	20oz/Linear Yard (13oz/sq yd)
Physicals:	Meets or exceeds federal specification CCCW-408-D Type II (flame spread, smoke developed and flashover) No harmful off gassing Prop 65 compliant: Cadmium and lead-free formulation Low VOC emitting vinyl media meets California section 01350 requirements for office and school interiors

APPLICATIONS

Standard commercial wallcovering pastes/primers and techniques

Type II Properties

Breaking Strengths, lbs force:

Machine Direction-warp:	Exceeds Type II minimum of 50lbs
Cross Machine Direction-fill:	Exceeds Type II minimum of 55lbs

Tearing Strengths, Scale:

Machine Direction-warp	Exceeds Type II minimums of 25lbs
Cross Machine Direction-fill	Exceeds Type II minimums of 25lbs

Cold Crack Resistance @ 20° F No Change

Heat Aging (7days at 158° F) Does not become stiff, brittle, discolored or show loss of grain

FIRE CLASSIFICATION:

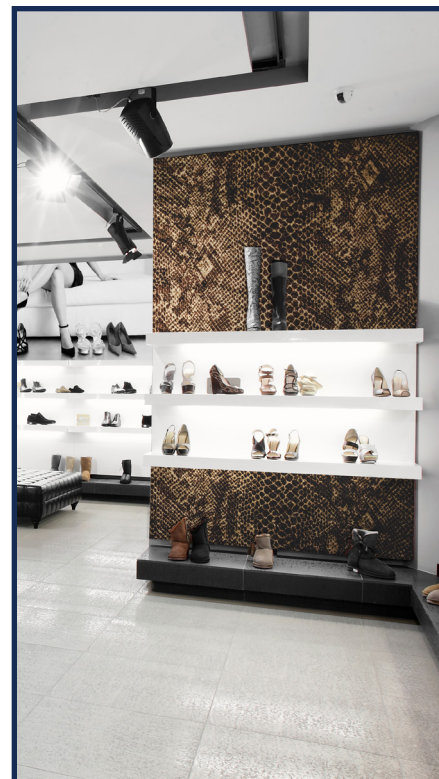
CLASS A – ASTM E-84

Flame and Smoke:	Class "A" Fire Rated – tested in accordance with ASTM-E84 Tunnel Test
Flame:	15
Smoke:	115
Passes:	ASTM-E84, NFPA-101

The National Fire Protection Association Life Safety Code 101, Section 6-5.3, "Interior Wall and Ceiling Finish Classification", has a means of classifying materials with respect to Flame Spread and Smoke Developed when tested in accordance with NFPA 255, "Method of Test of Surface Burning Characteristics of Building Materials", (ASTM E-84)

PRODUCT USE ADVISORY

This Type II wallcovering grade material is a 2 ply product with a leather embossing on the printable surface. Recommended for indoor use or short term outdoor, this product is ideal for murals, special effect signs and wallcovering. This product carries Type II certification for scurrability, tensile and tear (medium to heavy duty). This product is Class A fire rated and meets NFPA ratings for smoke development.



**Digitally printable wallcovering
with calf-skin like texture**

PICTURA™
INTERIORS

